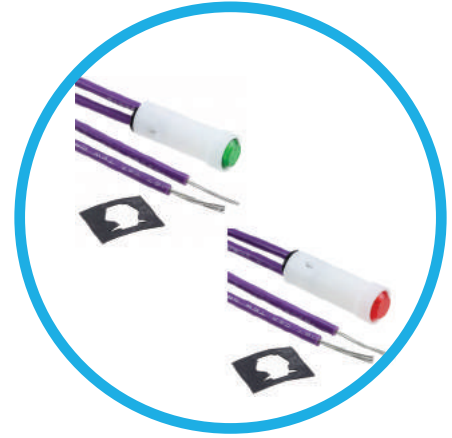




# 2195A Series Non-Relampable Panel Mount Indicator



## Description and Features

**Mounting:** Ø.310 MIN., supplied with push-on speednut SN1287-C

**Wire Leads:** No. 22 AWG (105°C) 4.40"/4.80" long, stripped .430"/.570"

**Lens:** Polycarbonate-neon transparent, incandescent-translucent

**Housing:** White Nylon

Underwriters Laboratories (UL) File No.E20356

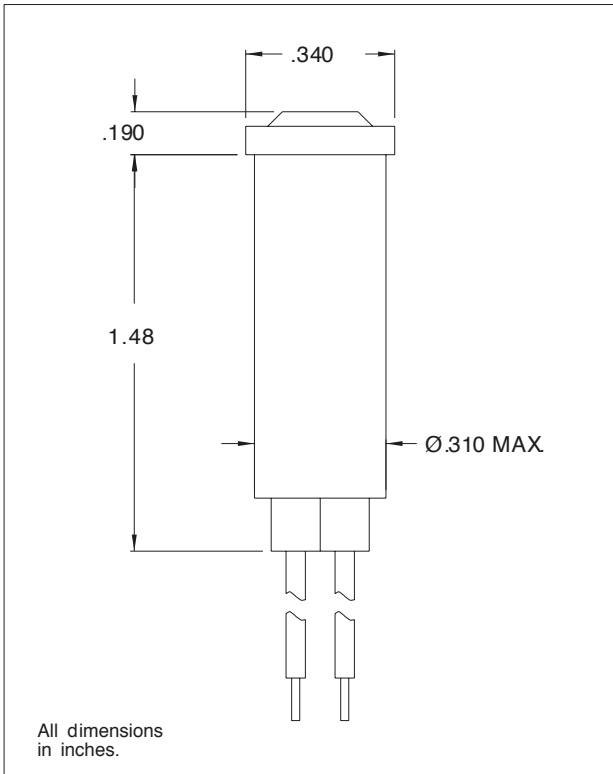
## Ordering Data

Lens Color	Incandescent		
	Model No. (6V)	Model No. (12V)	Model No. (28V)
Red	2195A1-6V	2195A1-12V	2195A1-28V
Clear	-	-	-
Amber	2195A3-6V	2195A3-12V	2195A3-28V
White	2195A4-6V	-	-
Green	2195A5-6V	2195A5-12V	2195A5-28V
Blue	-	-	-
Lamp Used	#2112	#2162	#2187
Lead Color	White	Yellow	Purple

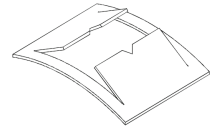
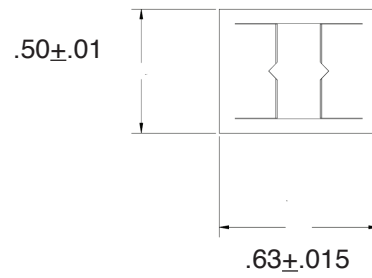
\* Incorporates G2B lamp and resistor.

\*\* Incorporates T2B lamp and resistor.

## Product Dimensions



Speed Nut SN1287-C



## Compliances and Approvals

