

NOTES:

- ① MAT'L: COPPER(STOCK TKN $\frac{028}{71} \begin{smallmatrix} +.001 \\ -.000 \end{smallmatrix}$)
PLATING: ELECTRO-TIN(.0003 MIN.)
- ② BRAZED SEAM

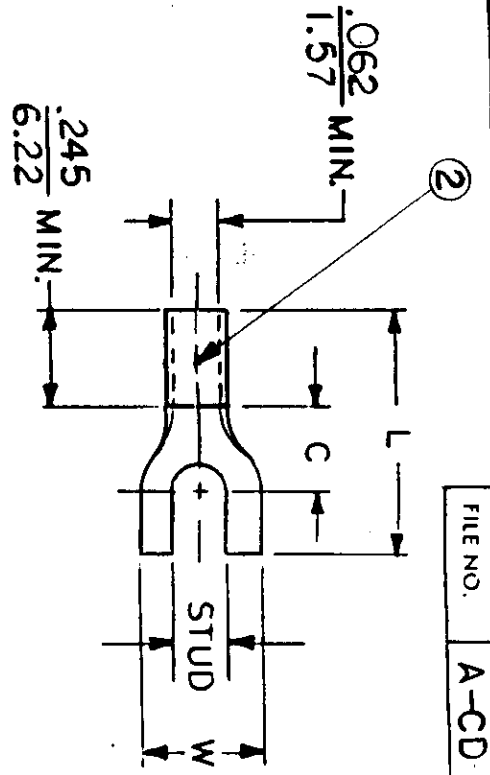
STUD SIZES: (+.005)

- 02 = .094
- 04 = .119
- 06 = .146
- 08 = .173
- 10 = .198
- 14 = .265
- 56 = .328
- 38 = .390

"UL" LISTING #E32244
"CSA" LISTING #18689

ALL DIMENSIONS = INCHES

WIRE SIZE: 22-18 AWG
.25-1.5 MM²



FILE NO. A-CD 303-02

PART NUMBER	"W" ±.010	"C" MIN.	"L" MAX.	AVAILABLE STUD SIZES
A-335-	$\frac{.316}{8.02}$	$\frac{.303}{7.70}$	$\frac{.778}{19.76}$	06, 08, 10

DIMENSIONAL TOLERANCES UNLESS OTHERWISE SPECIFIED

FRAC.	DEC.	ANG.
±	±	±

REFERENCE: SCALE: NTS

DRWN. BY: JJ DATE: 11-28-84

CHKD. BY: GA DATE: 12-5-84

APPRD. BY:

TITLE: SPADE TONGUE TERMINAL

VERSAKRIMP 300-SERIES

DWG. NO. A CUSTOMER DWG.