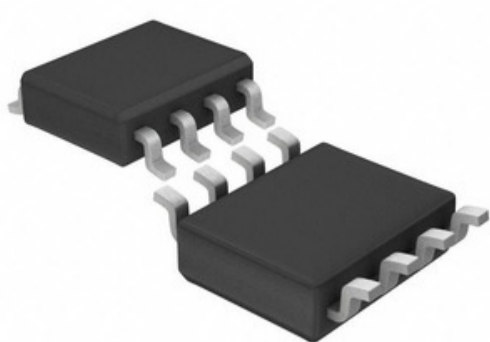




AHEAD OF WHAT'S POSSIBLE™



Chithunzi chitha kukhala choyimira.
Onani malongosoledwe azinthu zazamalonda.

LTC1285CS8#TRPBF

Gawo la Nambala: [LTC1285CS8#TRPBF](#)
 Mafotokozedwe Akatundu: IC A/D CONV SAMPLING 12BIT 8SOIC
 Mkhaliidwe wa RoHS: Kutsogolera / RoHS Kumvera
 Datasheets: [LTC1285CS8#TRPBF.pdf](#)

Wopanga / Chinthu: ADI (Analog Devices, Inc.)
 Chombo Chochokera: Hong Kong
 Njira Yopereker: DHL/Fedex/TNT/UPS/EMS

[TUMIZANI MAFUNSO](#)

Zambiri zamalonda

Gawo la Nambala	LTC1285CS8#TRPBF	Wopanga	ADI (Analog Devices, Inc.)
Kufotokozera	IC A/D CONV SAMPLING 12BIT 8SOIC	Mkhaliidwe Wopanda Ufulu / Mkhaliidwe wa RoHS	Kutsogolera / RoHS Kumvera
Tsamba lazambiri	LTC1285CS8#TRPBF.pdf		
Voltage - Supply, Digital	2.7 V ~ 6 V	Voltage - Supply, Analog	2.7 V ~ 6 V
Phukusi la Chipangizo Chothandizira	8-SOIC	Mndandanda	-
Malipiro a Zitsanzo (Per Second)	7.5k	Mtundu Wotchulidwa	External
Kugwirizana - S / H: ADC	1:1	Kupaka	Tape & Reel (TR)
Phukusi / Mlanduwu	8-SOIC (0.154", 3.90mm Width)	Kutentha Kwambiri	0°C ~ 70°C
Chiwerengero cha Zopangira	1	Chiwerengero cha Bits	12
Chiwerengero cha otembenusa A / D	1	Mphuno Yopanda Chisokonezo (MSL)	1 (Unlimited)
Nthawi Yotsogolera Yoyenera	10 Weeks	Mkhaliidwe Wopanda Ufulu / Mkhaliidwe wa RoHS	Lead free / RoHS Compliant
Mtundu Wotsatsa	Differential	Mawonekedwe	-
Kufotokozedwa Kwambiri	12 Bit Analog to Digital Converter 1 Input 1 SAR 8-SOIC	Chida Chadatha	SPI
Kusintha	S/H-ADC	Chigawo Choyambira	LTC1285
Zojambulajambula	SAR		

Zamgululi Related

<p>LTC1285IS8#PBF Opanga: ADI (Analog Devices, Inc.) Kufotokozera: IC A/D CONV SAMPLING 12BIT 8SOIC Sakanizani: LTC1285IS8#PBF.pdf</p> <p>RFQ</p>	<p>LTC1286CN8#PBF Opanga: ADI (Analog Devices, Inc.) Kufotokozera: IC A/D CONV SAMPLING 12BIT 8-DIP Sakanizani: LTC1286CN8#PBF.pdf</p> <p>RFQ</p>
<p>LTC1283CN#PBF Opanga: ADI (Analog Devices, Inc.) Kufotokozera: IC DATA ACQ SYS 10BIT 3V 20-DIP Sakanizani: LTC1283CN#PBF.pdf</p> <p>RFQ</p>	<p>LTC1285CN8#PBF Opanga: ADI (Analog Devices, Inc.) Kufotokozera: IC A/D CONV SAMPLING 12BIT 8-DIP Sakanizani: LTC1285CN8#PBF.pdf</p> <p>RFQ</p>
<p>LTC1285CS8#PBF Opanga: ADI (Analog Devices, Inc.) Kufotokozera: IC A/D CONV SAMPLING 12BIT 8SOIC Sakanizani: LTC1285CS8#PBF.pdf</p> <p>RFQ</p>	<p>LTC1282BCSW#PBF Opanga: ADI (Analog Devices, Inc.) Kufotokozera: IC A/D CONV SAMPLING W/REF24SOIC Sakanizani: LTC1282BCSW#PBF.pdf</p> <p>RFQ</p>
<p>LTC1286IN8#PBF Opanga: ADI (Analog Devices, Inc.) Kufotokozera: IC A/D CONV SAMPLING 12BIT 8-DIP Sakanizani: LTC1286IN8#PBF.pdf</p> <p>RFQ</p>	<p>LTC1285IS8#TRPBF Opanga: ADI (Analog Devices, Inc.) Kufotokozera: IC A/D CONV SAMPLING 12BIT 8SOIC Sakanizani: LTC1285IS8#TRPBF.pdf</p> <p>RFQ</p>
<p>LTC1283ACN#PBF Opanga: ADI (Analog Devices, Inc.) Kufotokozera: IC DATA ACQ SYS 10BIT 3V 20-DIP Sakanizani: LTC1283ACN#PBF.pdf</p> <p>RFQ</p>	<p>LTC1282BCSW#TRPBF Opanga: Linear Technology Kufotokozera: IC A/D CONV SAMPLING W/REF24SOIC Sakanizani: LTC1282BCSW#TRPBF.pdf</p> <p>RFQ</p>
<p>LTC1286CS8#TRPBF Opanga: ADI (Analog Devices, Inc.) Kufotokozera: IC A/D CONV SAMPLING 12BIT 8SOIC Sakanizani: LTC1286CS8#TRPBF.pdf</p> <p>RFQ</p>	<p>LTC1286CS8#PBF Opanga: ADI (Analog Devices, Inc.) Kufotokozera: IC A/D CONV SAMPLING 12BIT 8SOIC Sakanizani: LTC1286CS8#PBF.pdf</p> <p>RFQ</p>

Zogwirizana

ADI (Analog Devices, Inc.) LTC1285CS8#TRPBF
 Mtengo wa LTC1285CS8#TRPBF
 Zolembe pa LTC1285CS8#TRPBF PDF
 Msika wa LTC1285CS8#TRPBF
 ADI (Analog Devices, Inc.) LTC1285CS8#TRPBF
 ADI (Analog Devices, Inc.) LTC1285CS8#TRPBF
 Analog Devices Inc. LTC1285CS8#TRPBF

Wopereka LTC1285CS8#TRPBF
 Zithunzi za LTC1285CS8#TRPBF
 LTC1285CS8#TRPBF Datasheet Yotsitsa
 Gulani LTC1285CS8#TRPBF
 Wogulitsa ADI (Analog Devices, Inc.)
 AD LTC1285CS8#TRPBF
 Analog Devices, Inc. LTC1285CS8#TRPBF

Wogulitsa LTC1285CS8#TRPBF
 Chithunzi cha LTC1285CS8#TRPBF
 Masamba LTC1285CS8#TRPBF
 Gulani ADI (Analog Devices, Inc.) LTC1285CS8#TRPBF
 Wopereka ADI (Analog Devices, Inc.)
 ADI (Analog Devices, Inc.) LTC1285CS8#TRPBF